

TAMRON

Focal length: 90mm Exposure: F/4 1/125sec

SP90_{mm} F/2.8 MACRO VC

Introducing a new chapter in the history of
Tamron 90mm macro lenses.
Advanced features and level of craftsmanship
for a new experience.



SP 90mm F/2.8 Di MACRO 1:1 VC USD (Model F017)

For Canon, Nikon and Sony* mounts

Di: For APS-C format and full-frame DSLR cameras

* Sony mount model without VC

A New Chapter in the Distinguished History of Tamron's 90mm Macro Lenses A Legacy of Superior Optical Performance Now Reaches a New Plateau with Enhanced VC Functionality and Advanced Features

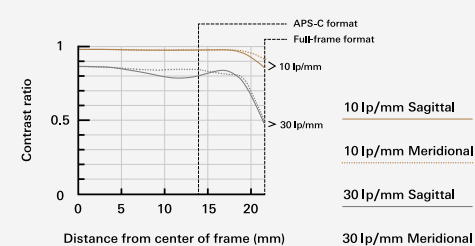
The SP 90mm F/2.8 MACRO VC (Model F017) is the most recent release in a successful line of Tamron SP 90mm macro lenses. It redefines the best in advanced features and succeeds a legacy of superior optical performance.

XY-Shift compensation has been newly added to reinforce VC functionality, further improving image stabilization capabilities at any shooting distance from infinity to macro. Advancements in USD control software have also increased AF focusing speed and optimally fine-tuned for various framing conditions. Furthermore, a high standard of Moisture-Proof and Dust-Resistant Construction has been added to prevent intrusion of dust or water droplets. Highly durable, Fluorine Coating is applied to the top element surface and efficiently prevents condensation of moisture and repels smudge-causing substances.

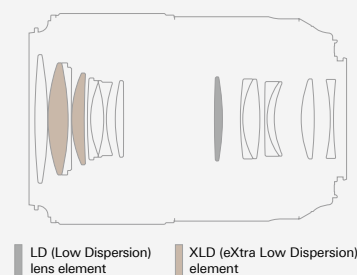
Meticulous craftsmanship is demonstrated in every detail of the exterior design of the newly transformed SP 90mm macro lens. The user can feel it in the exquisitely smooth texture of the metallic barrel.

MTF

Focal length: 90mm Exposure: F/2.8



Optical Construction



SP 90mm F/2.8 Di MACRO 1:1 VC USD
(Model F017)



Outstanding Depictive Capabilities and Anti-reflection Efficiency

The lens features an optical construction of 14 elements in 11 groups, including one LD (Low Dispersion) and two XLD (eXtra Low Dispersion) glass elements that in consonance help to control lateral and on-axis chromatic aberrations at a very high level of performance. A Floating System works in tandem with the optical construction to efficiently compensate for inherent aberration changes subject to varying distances. Therefore, this lens ensures seamless and outstanding depictive capabilities across the entire shooting range – close or far.

Flare or ghosting can be detrimental to a decisive shot. A combination of 2 types of coating – eBAND (Extended Bandwidth & Angular-Dependency) layered on top of BBAR (Broad-Band Anti-Reflection) – dramatically improves anti-reflection efficiency to deliver flawless, crystal clear images even against harsh beams of sunlight.



Focal length: 90mm Exposure: F/11 1/5sec

Commitment to Extending a Legacy of Bokeh with Elegance

Tamron has maintained a reputable standard for generations of 90mm macro lens models – all the way from manual focus lenses to the current AF models – for their exceptional depictive quality with spectacular bokeh. We also set a high standard to keep pace with the upward migration of digital cameras with advanced technical features and high pixel density.

We have now balanced these polar traits at a higher level: raising resolution performance to a new standard of sharp images, while rendering a soft and smooth transition in gradation of blur-effect in background objects. Optical simulations were thoroughly conducted to realize both well-tuned bokeh effects, while minimizing disturbance in dual-line smear of linear-shaped objects naturally blended into the overall bokeh effect.

The result: the SP 90mm F/2.8 MACRO VC sustains the tradition of excellence in optical design while extending the limit in cutting-edge optical performance and beautiful bokeh.



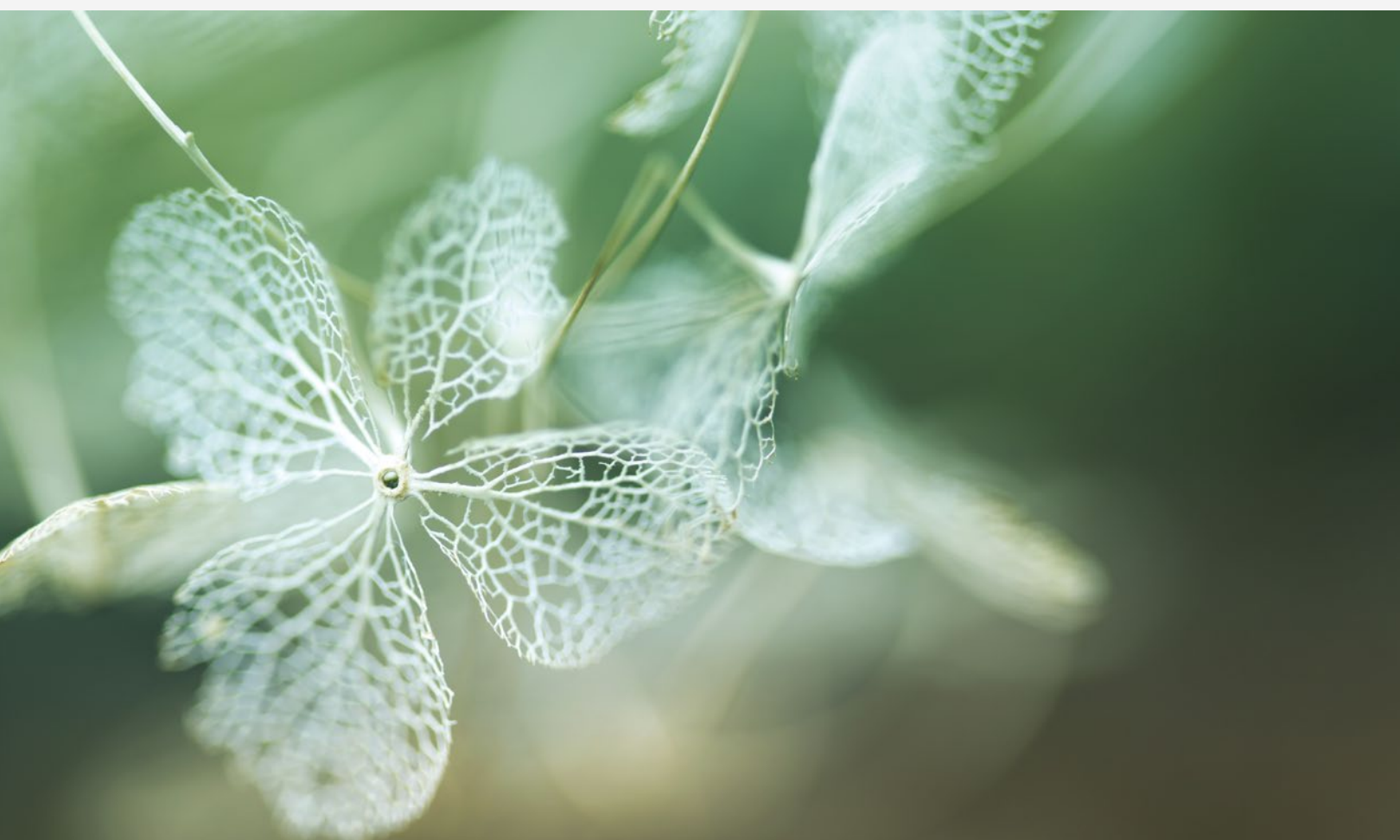
Focal length: 90mm Exposure: F/5.6 1/3sec

Optimally Tuned USD Actuator for Macro Photography with Manual Override for Instantaneous Focus Control

The USD (Ultrasonic Silent Drive) control software has been optimized for macro photography with increased focusing speed and positional accuracy when shooting in close-up settings. The AF drive responds rapidly yet quietly to zero in on the photographer's point of interest and the Manual Focus Override enables instant shift in focus when necessary.

Moisture-Proof and Dust-Resistant Construction and Fluorine Coating for Outdoor Shooting

A high standard of Moisture-Proof and Dust-Resistant Construction has been added to prevent intrusion of dirt, dust, or water droplets. In addition, Fluorine Coating has been applied to the front element surface to repel water and oil, which is especially useful when shooting outdoors.



Focal length: 90mm Exposure: F/2.8 1/80sec

High Performance Features behind Every Design Aesthetic

Our attention to every engineering detail has yielded the most advanced optical and electro-mechanical design featured in the newest Tamron SP lenses, culminating in a new benchmark for high performance and visual elegance.

The design philosophy is based on human touch and is an integral factor in macro photography. The newly designed all-metallic barrel features an embedded concave ring at the base of the lens – for a firm hold and comfort necessary for a steady shot.

Switches are larger and reconfigured for smoother torque and the typeface has been redesigned for intuitive legibility.



The SP Series Prime Lens Lineup (35mm, 45mm, 90mm Macro and 85mm)

SP series lenses are built to achieve optimal performance—including functionality, handling and physical design. All deliver maximum sharpness, clarity and optical fidelity and are compatible with both full-frame and APS-C type DSLRs. Every SP lens features VC to combat camera shake.



SP 90mm F/2.8 Di MACRO 1:1 VC USD (Model F017)

Model	F017	MOD	0.3m (11.8 in)	Aperture Blades	9 (circular diaphragm**)
Focal Length	90mm	Max. Magnification	1:1	Min. Aperture	F/32
Max. Aperture	F/2.8	Filter Size	Φ62mm	Stabilization Performance	3.5 stops (CIPA Standards Compliant) For Canon : EOS-5D MarkIII is used / For Nikon : D810 is used
Angle of View (diagonal)	27°2' for full-frame format 17°37' for APS-C format	Max. Diameter	Φ79mm	Standard Accessories	Lens hood, Lens caps
Optical Construction	14 elements in 11 groups	Length*	117.1mm (4.6 in) Canon 114.6mm (4.5 in) Nikon	Compatible Mounts	Canon, Nikon, Sony***
		Weight	610g (21.5 oz) Canon 600g (21.2 oz) Nikon		

Specifications, appearance, functionality, etc. are subject to change without prior notice.

* Length is the distance from the front tip of the lens to the lens mount face. ** The circular diaphragm stays almost perfectly circular up to two stops down from maximum aperture. *** Sony mount model without VC.

⚠ Caution: Please read the instruction manual carefully before using the lens.

F17-EG-111-I-1601-0000

TAMRON CO., LTD.

1385, Hasunuma, Minuma-ku,
Saitama-shi, Saitama 337-8556 JAPAN
Tel. +81-48-684-9339
Fax. +81-48-684-9349



Management on Quality and Environment

Tamron is certified with international standards: ISO 9001 for quality and ISO 14001 for environmental management at its headquarters, domestic sales offices, China plant as well as its three production facilities in Aomori, Japan, and is fully committed to striving for continued and sustainable improvement at all levels and facets of its business operations.