

SP AF70-200mm F/2.8 Di LD [IF] MACRO

new

TAMRON
New eyes for industry



A Lightweight Fast Tele-Zoom Enjoy the Richness of F/2.8

Di


Digitally Integrated Design

Model A001 For Canon, Nikon, Pentax, and Sony


<http://www.tamron.com>


E

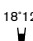


70mm  ^{34'21'}
 Exposure : F/11 Auto ISO100 RAW



200mm  ^{12'21'}
 (Equivalent to 310mm)
 Exposure : Aperture fully opened Auto ISO400 RAW
 (image taken with a digital SLR camera with an APS-C size sensor)

200mm  ^{12'21'}
 (Equivalent to 310mm)
 Exposure : F/4.5 Auto ISO400 RAW
 MFD : 0.95m Macro Magnification Ratio : 1:3.1
 (image taken with a digital SLR camera with an APS-C size sensor)

135mm  ^{18'12'}
 (Equivalent to 209mm)
 Exposure : F/4.5-1/1250 sec.
 ISO200 RAW
 (image taken with a digital SLR camera with an APS-C size sensor)

Best-in-class 0.95m MFD, plus 1:3.1 macro

A lightweight, high-performance, fast tele zoom



70mm  ^{34'21'}
 Exposure : F/11 Auto ISO100 RAW



Enjoy the rich expressive performance of a lightweight large-aperture telephoto zoom

With Tamron's new F/2.8 telephoto zoom lens, you can master the expression of real depth by creating soft-focus backgrounds to emphasize the crisp, clean lines of your subjects, or take advantage of fast shutter speeds to catch action at a distance. This high-performance fast lens gives you the mobility you need to capture outstanding telephoto zoom images—majestic scenery, stunning portraits, sports action, and more.

Minimum focus distance of 0.95m throughout the range plus 1:3.1 for excellent macro shooting

This lens boasts a minimum focus distance of 0.95m over the entire zoom range, the best performance in its class. This makes large-aperture telephoto zoom photography possible over a longer shooting range. The lens also has a maximum magnification ratio of 1:3.1 (at 200mm, with a minimum focus distance of 0.95m), enabling you to enjoy close-up macro photography of flowers, insects, and other tiny objects.

Tamron SP lenses—High-performance design

This zoom lens uses three LD (low dispersion) elements which effectively compensates for chromatic aberrations providing edge-to-edge sharpness and high-contrast image quality with flat-field characteristics over the entire zoom range. Moreover, through the use of "Internal Surface Coatings (i.e., multiple-layer coatings on cemented surfaces of plural elements)" and multiple-layer coatings to prevent reflections from lens surfaces is reduced to the absolute minimum.

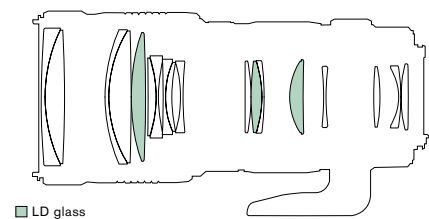
Specifications

Model	A001
Focal Length	70-200mm
Maximum Aperture	F/2.8
Angle of View	Diagonal: 34°21' - 12°21' (22°33' - 7°59') Horizontal: 28°51' - 10°17' (18°49' - 6°38') Vertical: 19°16' - 6°31' (12°22' - 4°15') ()=the figures when used on APS-C sized digital camera
Lens Construction	18 elements 13 groups
Minimum Focus Distance	0.95m (37.4") (throughout the range)
Max.Mag.Ratio	1:3.1 (at f=200mm, MFD:0.95m)
Overall Length	194.3mm (7.6")*
Maximum Diameter	ø89.5mm (3.5")
Filter Size	ø77mm
Weight	1150g (40.6oz.)* (without tripod mount)
Diaphragm Blades	9
Minimum Aperture	F/32
Standard Accessory	Flower-shaped hood, Lens Case
Compatible Mount	Canon, Nikon, Pentax, and Sony

*Values given are for Nikon cameras.

Lens Construction

<18 elements 13 groups>



new
SP AF70-200mm F/2.8 Di
LD [IF] MACRO

Tamron F2.8 Fast Zoom Series



SP AF70-200mm F/2.8 Di
(Model A001)

SP AF28-75mm F/2.8 XR Di
(Model A09)

A fast zoom lens providing excellent portability

SP AF28-75mm F/2.8 XR Di (Model A09)

Tamron is proud to present its latest, premium lens technologies—all packed into one large-aperture standard zoom that is remarkably lightweight and compact. Find out why photographers around the world are saying that no one can deliver outstanding imaging performance in lightweight, compact lenses like Tamron.

Accessory: flower-shaped hood

Filter diameter: ø67mm / **MFD:** 0.33m (throughout the range)

/ Overall length: 92mm* / **Maximum diameter:** ø73mm

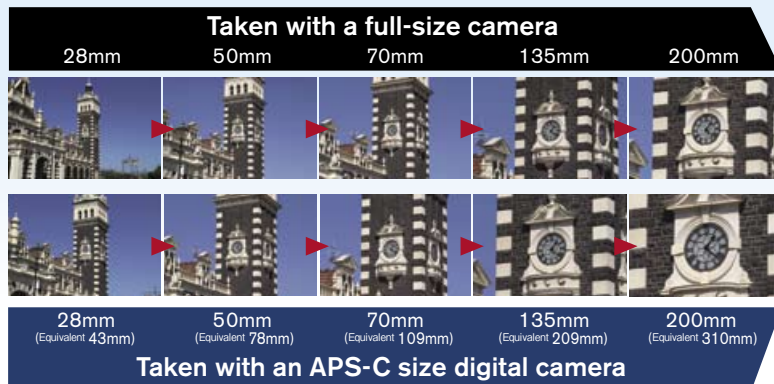
/ Weight: 510g* * Values given are for Nikon cameras.

The remarkably compact and lightweight SP AF28-75mm F/2.8 XR Di (Model A09) and the extremely lightweight large-aperture telephoto zoom SP AF70-200mm F/2.8 Di (Model A001) make you light on your feet as you enjoy the entire 28mm to 200mm range in F/2.8 brightness.

SP AF28-75mm F/2.8 XR Di (Model A09)

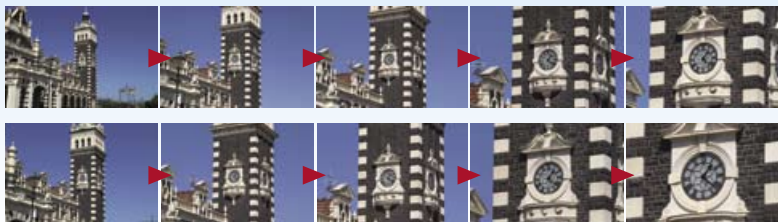
SP AF70-200mm F/2.8 Di (Model A001)

Different Angles of View



Taken with a full-size camera

28mm 50mm 70mm 135mm 200mm



28mm (Equivalent 43mm) 50mm (Equivalent 78mm) 70mm (Equivalent 109mm) 135mm (Equivalent 209mm) 200mm (Equivalent 310mm)

Taken with an APS-C size digital camera

*Tamron's conversion value is 1.55X.

Categories of Tamron's Di lens series

Di Lens Series

Digitally integrated design
Di lenses are designed to fit the characteristics of digital cameras as well as film cameras by paying attention to countermeasures against ghosting and flare through such advances as special coatings.

SP AF17-35mm F/2.8-4 Di (Model A05) **AF70-300mm F/4-5.6 Di Macro 1:2 (Model A17)**
SP AF28-75mm F/2.8 XR Di (Model A09) **SP AF70-200mm F/2.8 Di (Model A001)**
AF28-200mm F/3.8-5.6 XR Di (Model A031) **SP AF200-500mm F/5-6.3 Di (Model A08)**
AF28-300mm F/3.5-6.3 XR Di (Model A061) **SP AF90mm F/2.8 Di Macro 1:1 (Model 272E)**
AF28-300mm F/3.5-6.3 XR Di VC (Model A20) **SP AF180mm F/3.5 Di Macro 1:1 (Model B01)**

NOTE : The angles of view obtained by a "Di" lens mounted on a digital camera with smaller-size imagers differ from those obtained by the same lens mounted on full-size format SLRs.

Di II Lens Series

Designed exclusively for digital cameras with APS-C size imagers
Di-II lenses are designed exclusively for digital SLRs with APS-C size imagers. This series of lenses is not designed for 35mm film cameras and digital SLR cameras with image sensors larger than 24 x 16mm.

SP AF11-18mm F/4.5-5.6 Di II (Model A13) **AF18-200mm F/3.5-6.3 XR Di II (Model A14)**
SP AF17-50mm F/2.8 XR Di II (Model A16) **AF18-250mm F/3.5-6.3 Di II (Model A18)**
AF55-200mm F/4-5.6 Di II (Model A15)

NOTE : Vignetting occurs when pictures are taken with a Di-II lens mounted on full-size format SLRs or a digital SLRs with an image sensor larger than 24 x 16mm.

Caution : Please read the instruction manual carefully before using the lens.

TAMRON®

Manufacturer of precise and sophisticated optical products for a broad range of industries.



Quality Assurance Activities: At Tamron, quality management activities are performed in compliance with ISO9001:2000 not only to assure product quality but to enhance customer satisfaction.

Environmental Protection: We recognize the significance of our social responsibilities. Tamron promotes corporate activities that protect the earth's environment through the establishment of a quality assurance system that is compliant with ISO14001.

TAMRON CO., LTD. <http://www.tamron.co.jp/en>

1385, Hasunuma, Minuma-ku, Saitama-shi, Saitama 337-8556 JAPAN Tel: +81-48-684-9339 Fax: +81-48-684-9349

A001-EG-111-U-0710-0000